



Accessories for Lubrication

THK General Catalog

B Product Specifications

Dimensional Drawing, Dimensional Table	
Grease Gun Unit MG70	B-864
Special Plumbing Fixtures	B-865
Grease nipple	B-866

A Technical Descriptions of the Products (Separate)

Lubrication	A-954
Types of Lubricants	A-954
• Grease Lubrication	A-955
• Oil Lubrication	A-955
Lubrication under Special Environments ..	A-956
Lubrication Methods	A-957
• Manual Lubrication	A-957
• Forced Lubrication Method	A-957
Lubrication Accessory Series for LM Systems	A-958
• THK Original Grease	A-958
• AFA Grease	A-959
• AFB-LF Grease	A-960
• AFC Grease	A-961
• AFE-CA Grease	A-963
• AFF Grease	A-965
• AFG Grease	A-968
• Grease Gun Unit MG70	A-970
• Special Plumbing Fixtures	A-970
• Grease nipple	A-970

* Please see the separate "A Technical Descriptions of the Products".

Lubrication Equipment

Grease Gun Unit MG70

- Discharge pressure: 19.6 MPa max
- Discharge rate: 0.6 cc/stroke
- Grease: 70 g bellows cartridge
- Overall length: 235 mm (excluding the nozzle)
- Weight: 480 g (including the nozzle, excluding the grease)



Grease Gun Unit MG70 is capable of lubricating small to large types of LM Guides by replacing dedicated nozzles (attached). For small LM Guides, MG70 is provided with dedicated attachments. The user can select from these attachments according to the model number and the installation space. MG70 has a slit window, allowing the user to check the remaining amount of grease.

It is equipped with a bellows cartridge that can hold 70 g of grease and is replaceable without smirching your hand. It supports a wide range of grease products, including AFA Grease, AFB-LF Grease, AFC Grease and AFE-CA Grease, to meet varied conditions. This enables you to make a selection according to the area requiring grease. (See A-959 to A-969.)

Since the grease to be used is sold separately, you must purchase it separately.

Table for Supported Model Numbers

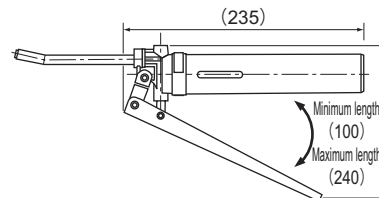
Type	Dimensions	Supported model numbers	
Type N		LM Guide	Models SSR15, SHS15, SR15, HSR12, HSR15, CSR15, HRW17, GSR15, RSR15, RSH15, HCR12 and HCR15
		Cam Follower	Models CF, CFN and CFH
		Rod End	Models PHS5 to 22, RBH and POS8 to 22
Type P		LM Guide	Models HSR8, HSR10, HRW12, HRW14, RSR12 and RSH12
Type L		LM Guide	Models HSR8, HSR10, HRW12, HRW14, RSR12 and RSH12
Type H		LM Guide	Models with grease nipple M6F or PT1/8
		Ball screw	
		Rod End	Models PHS25, PHS30, POS25 and POS30
Dedicated nozzle type U		—	—

Note) Types P and L are also capable of greasing less accessible areas other than the model numbers above (by dropping grease on the raceway).

Model number coding

MG70

(THK offers grease guns only for a 70g cartridge.)

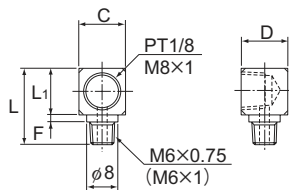


Accessories for Lubrication

Special Plumbing Fixtures

For centralized greasing and oil lubrication, special plumbing fixtures are available from THK. When ordering an LM system, specify the model number, mounting orientation and piping direction. We will ship the LM system attached with the corresponding fixture.

LF-A
LF-B
LF-E

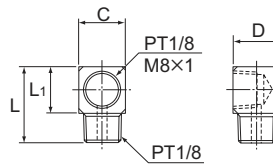


Unit: mm

Model	Screw	L	L ₁	F	C	D
LF-A (LF-E)	PT1/8	20	12	2	12	12
LF-B	M8x1	18.5	10	2.5	9.5	18

*LF-E: the same size with LF-A; mounting screw: M6x1

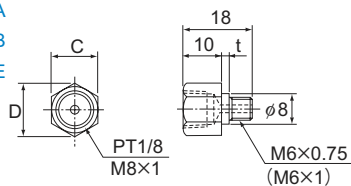
LF-C
LF-D



Unit: mm

Model	Screw	L	L ₁	C	D
LF-C	PT1/8	20	12	12	12
LF-D	M8x1	18	10	10	18

SF-A
SF-B
SF-E

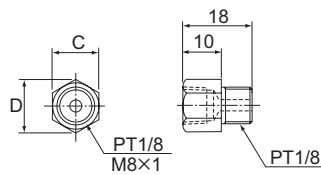


Unit: mm

Model	Screw	t	C	D
SF-A (SF-E)	PT1/8	2	12	13.8
SF-B	M8x1	2	10	11.5

*SF-E: the same size with SF-A; mounting screw: M6x1

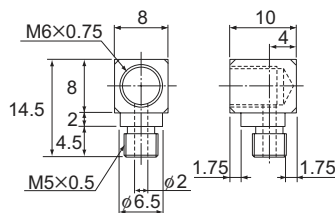
SF-C
SF-D



Unit: mm

Model	Screw	C	D
SF-C	PT1/8	12	13.8
SF-D	M8x1	10	11.5

LD



Unit: mm

Model	Screw
LD	M6x0.75

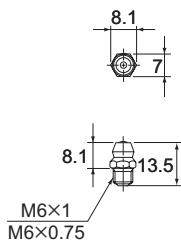
Accessories for Lubrication

Accessories for Lubrication

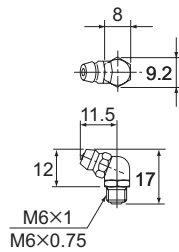
Grease Nipple

THK provides various types of grease nipples needed for the lubrication of LM systems.

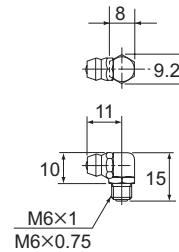
A-MT6×1 (M6×1)
A-M6F (M6×0.75)



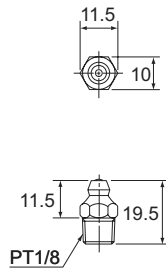
B-MT6×1 (M6×1)
B-M6F (M6×0.75)



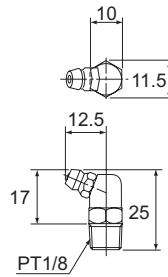
C-MT6×1 (M6×1)
C-M6F (M6×0.75)



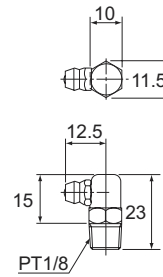
A-PT1/8



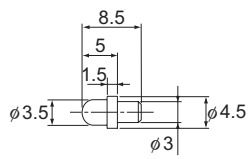
B-PT1/8



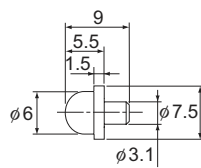
C-PT1/8



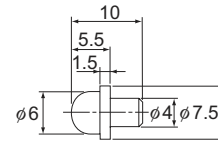
PB107



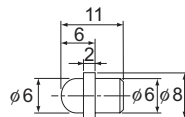
NP3.2×3.5



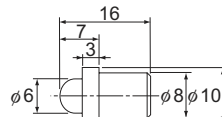
PB1021B



NP6×5



NP8×9



Accessories for Lubrication



THK B-867