



# LM Roller

**THK** General Catalog

## B Product Specifications

### Dimensional Drawing, Dimensional Table

Models LR and LR-Z .....	B-524
Models LRA and LRA-Z .....	B-525
Models LRB and LRB-Z .....	B-526
Model LRU .....	B-527

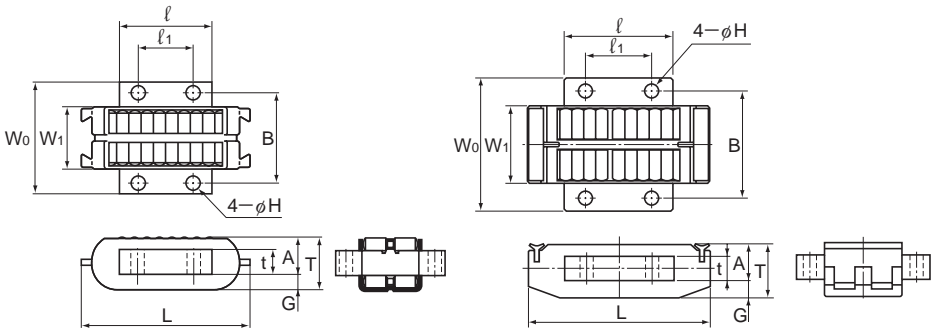
<b>Options</b> .....	B-528
Spring Pad .....	B-528
Models SM and SMB .....	B-529
Models SE and SEB .....	B-530

## A Technical Descriptions of the Products (Separate)

<b>Features and Types</b> .....	A-604
Features of the LM Roller .....	A-604
• Structure and features .....	A-604
Types of the LM Roller .....	A-606
• Types and Features .....	A-606
<b>Point of Selection</b> .....	A-608
Nominal Life .....	A-608
Accuracy Standards .....	A-611
<b>Point of Design</b> .....	A-612
Raceway .....	A-612
Installing the LM Roller .....	A-613
Guidance for Adjusting the Clearance ..	A-614
Examples of Arranging LM Roller Units ..	A-615
Examples of Installing the LM Roller ..	A-616
<b>Options</b> .....	A-617
Spring Pad Model PA .....	A-617
Fixture Models SM/SMB and SE/SEB ....	A-618
<b>Precautions on Use</b> .....	A-619

\* Please see the separate "A Technical Descriptions of the Products".

# Models LR and LR-Z



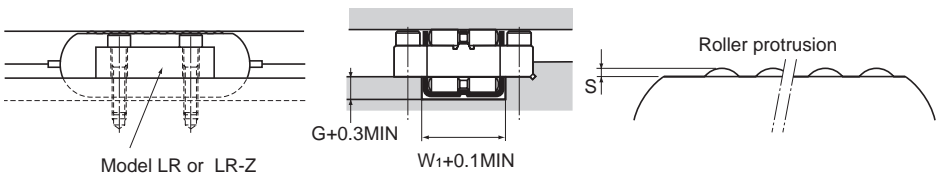
Model LR

Model LR-Z

Unit: mm

Model No.	Main dimensions													Mass g	Basic dynamic load rating C kN	Basic static load rating C <sub>0</sub> kN
	W <sub>1</sub>	Length	Thick- ness	Width				ℓ	Mounting hole pitch			Mounting bolt				
	$0$ $-0.1$	L	T	W <sub>0</sub>	A	t	G	$0$ $-0.2$	ℓ <sub>1</sub>	B	H	S				
LR 1547Z	15	47	16	30	11	7	5	20	12	23	3.4	0.2	M3*	60	15.2	17.6
LR 2055Z	20	55	17.3	36	12	8	5.3	30	18	29	4.5	0.2	M4*	110	26	37.8
LR 2565Z	25	65	20.6	45	14	9	6.6	35	20	36	5.5	0.1	M5*	190	40.4	61.1
LR 3275Z	32	75	21.6	55	15	10	6.6	45	27	44	5.5	0.1	M5*	320	52.5	91
LR 4095	40	95	30	68	21	14	9	55	35	54	6.6	0.3	M6	800	84.5	140
LR 50130	50	130	42	82	30	20	12	78	50	66	9	0.3	M8	1810	149	255

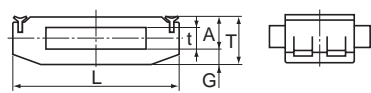
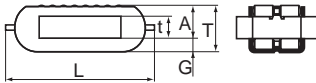
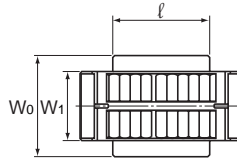
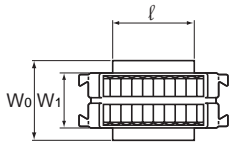
Note) Using a hexagonal-socket-head type bolt as the mounting bolt marked with \* may cause interference.



Model LR or LR-Z

$W_1+0.1\text{MIN}$

# Models LRA and LRA-Z

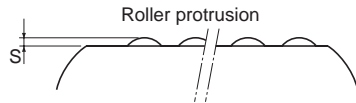
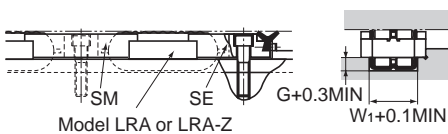
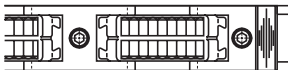


Model LRA

Model LRA-Z

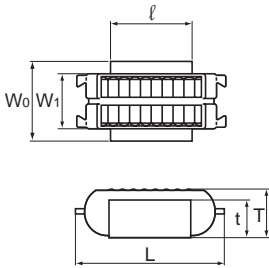
Unit: mm

Model No.	Main dimensions									Mass g	Basic dynamic load rating C kN	Basic static load rating C <sub>0</sub> kN
	W <sub>1</sub>	Length	Thick- ness	Width	A	t	G	l	S			
	$0$ $-0.1$	L	T	W <sub>0</sub>				$0$ $-0.2$				
LRA 1547Z	15	47	16	22.2	11	7	5	20	0.2	54	15.2	17.6
LRA 2055Z	20	55	17.3	30	12	8	5.3	30	0.2	104	26	37.8
LRA 2565Z	25	65	20.6	38.1	14	9	6.6	35	0.1	180	40.4	61.1
LRA 3275Z	32	75	21.6	45	15	10	6.6	45	0.1	310	52.5	91
LRA 4095	40	95	30	55	21	14	9	55	0.3	740	84.5	140
LRA 50130	50	130	42	76.2	30	20	12	78	0.3	1770	149	255

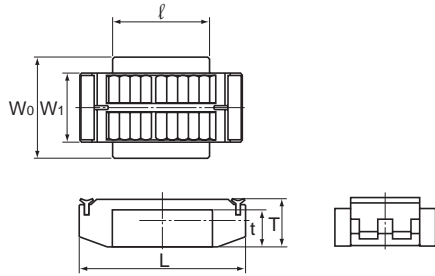


LM Roller

# Models LRB and LRB-Z



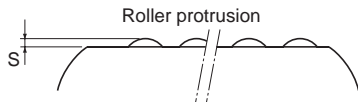
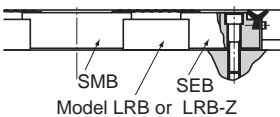
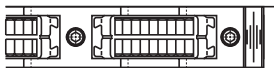
Model LRB



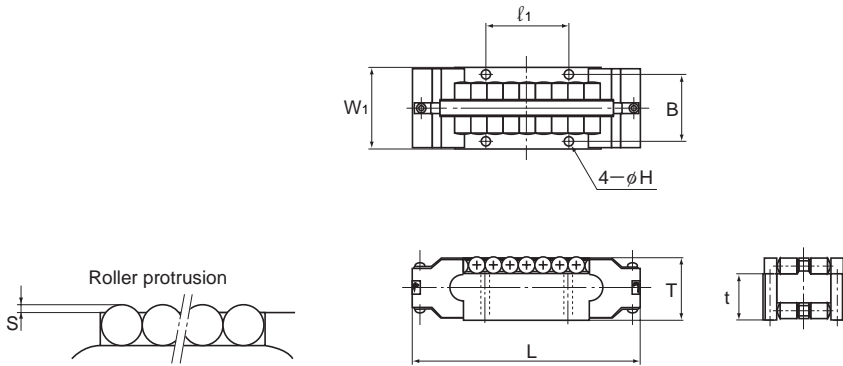
Model LRB-Z

Unit: mm

Model No.	Main dimensions							Mass g	Basic dynamic load rating C kN	Basic static load rating C <sub>0</sub> kN
	W <sub>1</sub> 0 -0.1	Length L	Width W <sub>0</sub>	Thick- ness T	t	l 0 -0.2	S			
LRB 1547Z	15	47	22.2	17	13	20	0.2	60	15.2	17.6
LRB 2055Z	20	55	30	18	14	30	0.2	117	26	37.8
LRB 2565Z	25	65	38.1	21	16	35	0.1	205	40.4	61.1
LRB 3275Z	32	75	45	22	17	45	0.1	340	52.5	91
LRB 4095	40	95	55	31	24	55	0.3	800	84.5	140
LRB 50130	50	130	76.2	43	33	78	0.3	1970	149	255

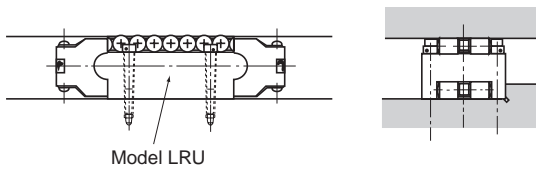


# Model LRU



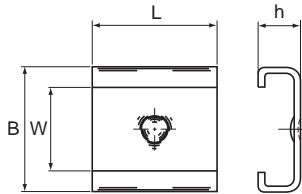
Unit: mm

Model No.	Main dimensions									Mass kg	Basic dynamic load rating C kN	Basic static load rating C <sub>0</sub> kN	
	Thick- ness T	Width		t	Length			B	H				S
		W <sub>1</sub>	Tolerance		L	l <sub>1</sub>							
LRU 22.2	14.283	22.23	$\begin{matrix} 0 \\ -0.050 \end{matrix}$	10.48	51	19.05	17.07	3	0.253	0.09	11.9	14.5	
LRU 25.4	19.05	25.4	$\begin{matrix} 0 \\ -0.050 \end{matrix}$	13.97	73	25.4	20.6	3.4	0.2	0.22	28.1	39.8	
LRU 38.1	28.573	38.1	$\begin{matrix} 0 \\ -0.050 \end{matrix}$	20.953	101.6	38.1	30.96	4.5	0.22	0.7	59.4	88.2	
LRU 50.8	38.098	50.8	$\begin{matrix} 0 \\ -0.075 \end{matrix}$	27.938	139.7	50.8	41.28	5.6	0.46	1.7	103	159	
LRU 76.2	57.15	76.2	$\begin{matrix} 0 \\ -0.075 \end{matrix}$	41.15	206.4	76.2	61.9	6.6	0.5	5.7	245	402	



LM Roller

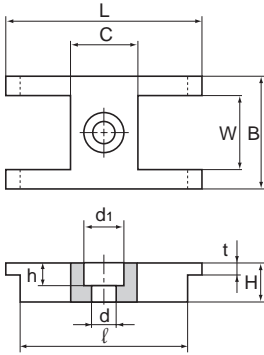
## Spring Pad Model PA



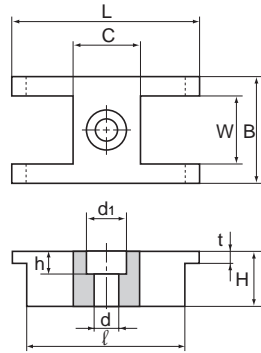
Unit: mm

Model No.	Main dimensions				Installation related dimensions(see A-618)					Maximum permissible load kN	Spring constant kN/mm	Supported LM Roller
	W	B	L	h	H	S +0.15 +0.05	F	P	Adjust- ment bolt			
PA 15	15	22.2	20	9	21	22.2	11.5	65	M5	1.02	5.4	LRA 1547Z
PA 20	20	30	30	9.5	22.5	30	12	75	M6	2.74	7.5	LRA 2055Z
PA 25	25	38.1	35	12	27	38.1	14.5	90	M8	4.11	9.1	LRA 2565Z
PA 32	32	45	45	12.5	28.5	45	15	100	M8	4.11	11.2	LRA 3275Z
PA 40	40	55	55	16	38	55	18.5	126	M10	4.8	15.3	LRA 4095
PA 50	50	76.2	78	21	52	76.2	23.5	170	M12	6.86	15.5	LRA 50130

## Fixtures Models SM/SMB



Model SM



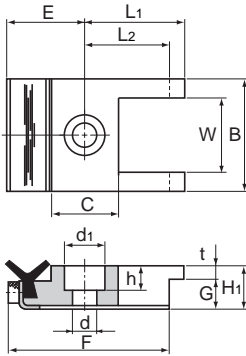
Model SMB

Unit: mm

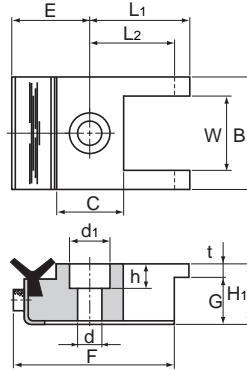
Model No.	Main dimensions										Mass g
	W	B	L	C	ℓ	H	t	d	d <sub>1</sub>	h	
SM 15	15	22.2	53	16	45	9	3	5.5	9.5	5.4	38
SMB 15	15	22.2	53	16	45	15	3	5.5	9.5	5.4	60
SM 20	20	30	53	18	45	10	3	6.6	11	6.5	60
SMB 20	20	30	53	18	45	16	3	6.6	11	6.5	95
SM 25	25	38.1	65	23	55	12	4	9	14	8.6	115
SMB 25	25	38.1	65	23	55	19	4	9	14	8.6	120
SM 32	32	45	65	23	55	13	4	9	14	8.6	135
SMB 32	32	45	65	23	55	20	4	9	14	8.6	215
SM 40	40	55	81	28	71	19	6	11	17.5	10.8	290
SMB 40	40	55	81	28	71	29	6	11	17.5	10.8	455
SM 50	50	76.2	102	38	92	28	9	14	20	13	890
SMB 50	50	76.2	102	38	92	41	9	14	20	13	1320

LM Roller (Options)

## Fixtures Models SE/SEB



Model SE



Model SEB

Unit: mm

Model No.	Main dimensions													Mass g
	W	B	L <sub>1</sub>	L <sub>2</sub>	E	F	C	H <sub>1</sub>	G	t	d	d <sub>1</sub>	h	
SE 15	15	22.2	26.5	22.5	18	40.5	16	10	7	3	5.5	9.5	5.4	35
SEB 15	15	22.2	26.5	22.5	18	40.5	16	16	13	3	5.5	9.5	5.4	64
SE 20	20	30	26.5	22.5	19	41.5	18	11	8	3	6.6	11	6.5	60
SEB 20	20	30	26.5	22.5	19	41.5	18	17	14	3	6.6	11	6.5	105
SE 25	25	38.1	32.5	27.5	21.5	49	23	13	9	4	9	14	8.6	110
SEB 25	25	38.1	32.5	27.5	21.5	49	23	20	16	4	9	14	8.6	175
SE 32	32	45	32.5	27.5	21.5	49	23	14	10	4	9	14	8.6	140
SEB 32	32	45	32.5	27.5	21.5	49	23	21	17	4	9	14	8.6	220
SE 40	40	55	40.5	35.5	24	59.5	28	20	14	6	11	17.5	10.8	295
SEB 40	40	55	40.5	35.5	24	59.5	28	30	24	6	11	17.5	10.8	415
SE 50	50	76.2	51	46	29	75	38	29	20	9	14	20	13	840
SEB 50	50	76.2	51	46	29	75	38	42	33	9	14	20	13	1245