



Slide Pack

THK General Catalog

A Technical Descriptions of the Products

Features and Types	A-636
Features of Slide Pack	A-636
• Structure and features.....	A-636
Types of the Slide Pack	A-638
• Type.....	A-638
• Clearance	A-639
Options.....	A-640
Contamination Protection.....	A-640
Metal Dustproof Cover	A-640
Jointed Slide Rails.....	A-640
Mounting Procedure and Maintenance...	A-641
Installation	A-641
Lubrication.....	A-642
Precautions on Use.....	A-643

B Product Specifications (Separate)

Dimensional Drawing, Dimensional Table	
Models FBW 2560R and 3590R	B-536
Models FBW 50110R and 50110H	B-537
Options.....	B-538
Metal Dustproof Cover	B-538
Mounting Procedure and Maintenance...	B-539
Installation	B-539

* Please see the separate "B Product Specifications".

Features of the Slide Pack

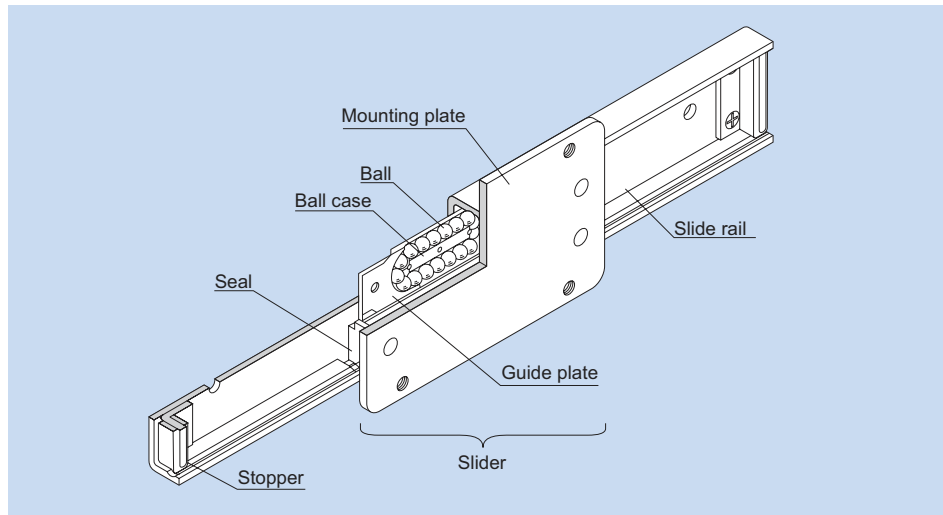


Fig.1 Structure of Slide Pack Model FBW-RUU

Structure and Features

Slide Pack model FBW is an LM system in which a precision press molded slider that contains balls performs infinite straight motion. Used in combination with a slide rail, the Slide Pack achieves lightweight and compact design and smooth straight motion at a low price.

The ball case and the slide rail are nitrided to ensure high wear resistance. (The slide rail of model FBW 2560R is made of stainless steel.)

The Slide Pack is optimal for slide units of photocopiers, tool cabinets, electronic equipment cabinets, moving seats, automatic vending machines, machine tool slide covers, cash registers, heavy doors and curtain walls.

Features and Types

Features of the Slide Pack

[Low Cost, Interchangeable]

Since it is press molded with precision, this LM system achieves stable quality and interchangeability at low cost.

[Infinite Stroke Length]

Unlike the conventional finite stroke type, the slider is capable of performing infinite motion. When connected with a slide rail, it can be used in long-stroke applications.

[Easy Installation and Handling]

Because of the structure that prevents balls from falling off even if the slider is removed from the slide rail, this model is easy to handle and can be used in a complex construction where it is impossible to install an LM system unless it is disassembled.

[A Type Equipped with a Contamination Protection Seal Also Standardized]

A type equipped with a contamination protection seal is standardized for locations where cutting chips or dust may enter the system.



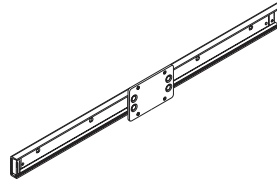
Types of the Slide Pack

Type

Model FBW 2560R

This model is a compact type.

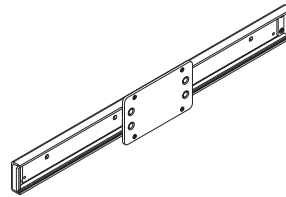
Specification Table⇒B-536



Model FBW 3590R

This model is a standard type.

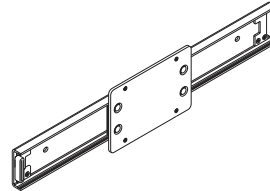
Specification Table⇒B-536



Model FBW 50110R

This model is a heavy load type.

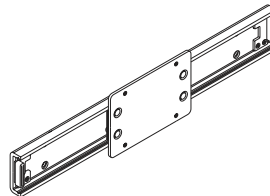
Specification Table⇒B-537



Model FBW 50110H

This model is a high rigidity type.

Specification Table⇒B-537



Features and Types

Types of the Slide Pack

Clearance

Model FBW is manufactured to the following accuracies.

Vertical clearance: 0.03 mm or less

Horizontal clearance: 0.1 mm or less

These specifications are values when the slide rail is attached to a rigid base.

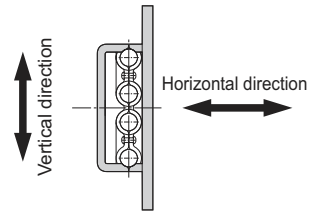


Fig.2

Slide Pack



Contamination Protection

For Slide Pack model FBW-R (H), a special synthetic rubber seal with high contamination protection characteristics, capable of preventing foreign material from entering the slider and the lubricant from leaking, is available. The seal increases the contamination protection effect by contacting both the slide rail raceway where balls roll and the slide rail itself.

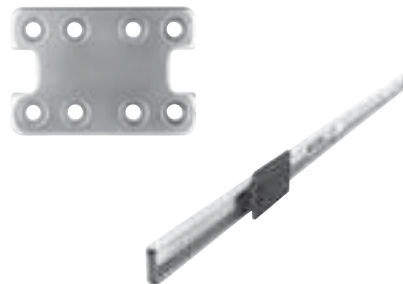


Metal Dustproof Cover

For Slide Pack model FBW, steel covers that cover the whole slide rail to prevent foreign material from entering the slide are available. For detailed dimensions, see B-538.

Jointed Slide Rails

If the required specifications exceed the standard stroke, two or more slide rails can be connected. When placing an order, indicate the overall length.



Installation

[Mounting Screws of the Slide Rail]

Since the space for securing the mounting screws of the slide rail is small as shown in Fig.1, we recommend using button-head bolt or binding-head bolt (JIS B 1111 annex).

(Note) The slide rail of model FBW 50110H is countersunk. We recommend mounting the slide rail using hexagonal-socket-head type bolts (M5).

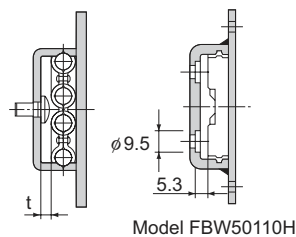


Fig.1

Unit: mm

Model No.	t
FBW 2560R	3.2
FBW 3590R	3.4
FBW 50110R	3.4
FBW 50110H	—

[Attaching the Stopper]

If the slider may overshoot and come off of the slide rail, attach the dedicated stopper to the slide rail end as shown in Fig.2.



Fig.2

[Installing the Slider]

With model FBW-R (H), balls will not fall off even if the slider is removed from the slide rail. However, they could fall if the slider is twisted when reattaching it to the slide rail. Whenever possible, do not remove the slider from the slide rail when installing the Slide Pack.

[Groove Dimensions]

Fig.3 shows the dimensions of grooves for applications where model FBW-R (H) is installed in a groove.

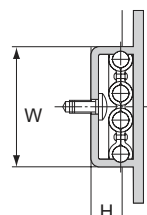


Fig.3

Unit: mm

Model No.	W	H
FBW 2560R	24.8 ^{+0.15} / _{+0.1}	7.4
FBW 3590R	37 ^{+0.15} / _{+0.1}	10
FBW 50110R	50 ^{+0.15} / _{+0.1}	10
FBW 50110H	54.4 ^{+0.15} / _{+0.1}	13

Lubrication

Apply high-quality lithium soap group grease to the raceway of the slide rail before using the product.

[Handling]

- (1) Disassembling components may cause dust to enter the system or degrade mounting accuracy of parts. Do not disassemble the product.
- (2) Tilting the slider or slide rail may cause them to fall by their own weight.
- (3) Dropping or hitting the Slide Pack may damage it. Giving an impact to the Slide Pack could also cause damage to its function even if the product looks intact.

[Lubrication]

- (1) Apply high-quality lithium soap group grease to the raceway of the slide rail before using the product.
- (2) Do not mix lubricants of different physical properties.

[Precautions on Use]

- (1) The static permissible load of the Slide Pack varies according to the direction.
- (2) Entrance of foreign material may cause damage to the ball circulating component or functional loss. Prevent foreign material, such as dust or cutting chips, from entering the system.
- (3) If foreign material such as dust or cutting chips adheres to the product, replenish the lubricant after cleaning the product with pure white kerosene.
- (4) Avoid using the product at other than normal temperature, or using it in harsh conditions such as intensive reciprocations that generate frictional heat and environments with water or dust.
- (5) When using the Slide Pack with inverted mount, breakage of the slider due to an accident or the like may cause balls to fall and the slider to come off from the slide rail and fall. In these cases, take preventive measures such as adding a safety mechanism for preventing such falls.
- (6) When you remove the slider from the slide rail and then reassemble them, inserting the slide rail into the slider while twisting them may cause balls to fall or damage the slider. Be sure to gently insert the rail straight into the slider while checking the position of the slider balls and that of the rail raceway.

[Storage]

When storing the Slide Pack, enclose it in a package designated by THK and store it while avoiding high temperature, low temperature and high humidity.

A-644 THK